

Department of Transportation and Development 2023 Project Outlook



Chad Winchester, PE
Chief Engineer
November 2023

Topics for Today

- Responsibilities
- Funding and Budget
- Chief Engineer Perspective
- Project Outlook
- Questions and Discussion



Scope of Responsibility

ROADWAY



16,642
miles of roadway

10th
largest highway system
in U.S.



12,855
BRIDGES

3rd
highest bridge deck area
in U.S.



PORT

33 ports



AVIATION

69 airports

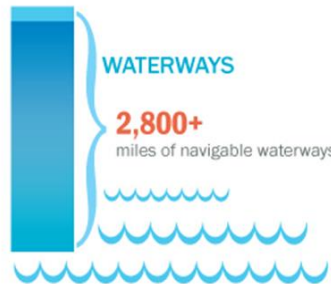


RAIL

6 Class 1 railroads
2,606 main track miles



50,000 miles of pipeline



WATERWAYS

2,800+
miles of navigable waterways

360,000+ acres
mowed annually



25,000+ cu. yd.
of litter removed



over **1,000** buildings
and **10** rest areas



3,000+
highway-rail crossings



3,000+
traffic signals



1 million+
traffic signs



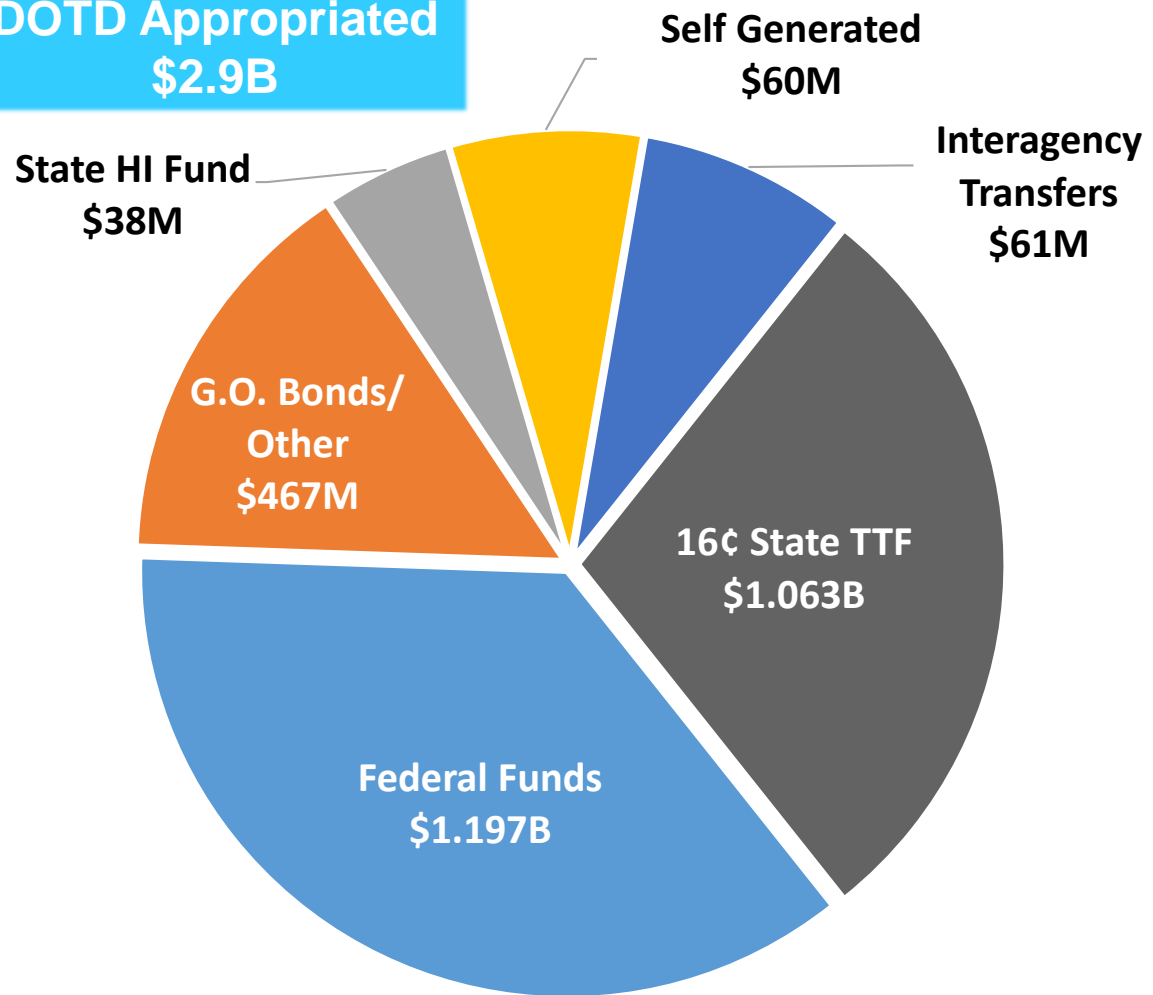
3 ferry service
locations

Funding and Budget

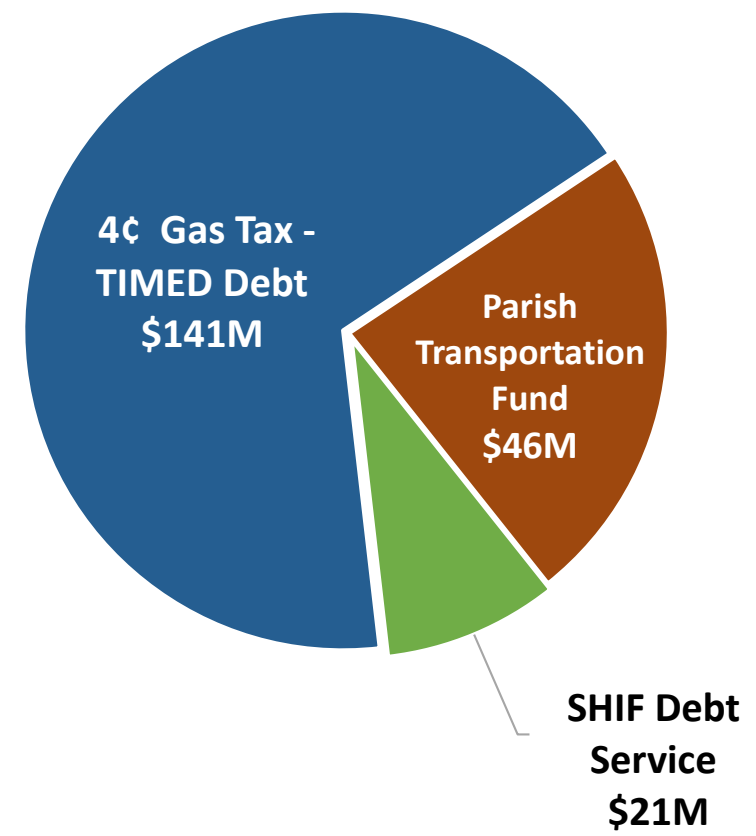
FY 24 \$3.1B Funding Breakout

by Type of Revenue

DOTD Appropriated
\$2.9B

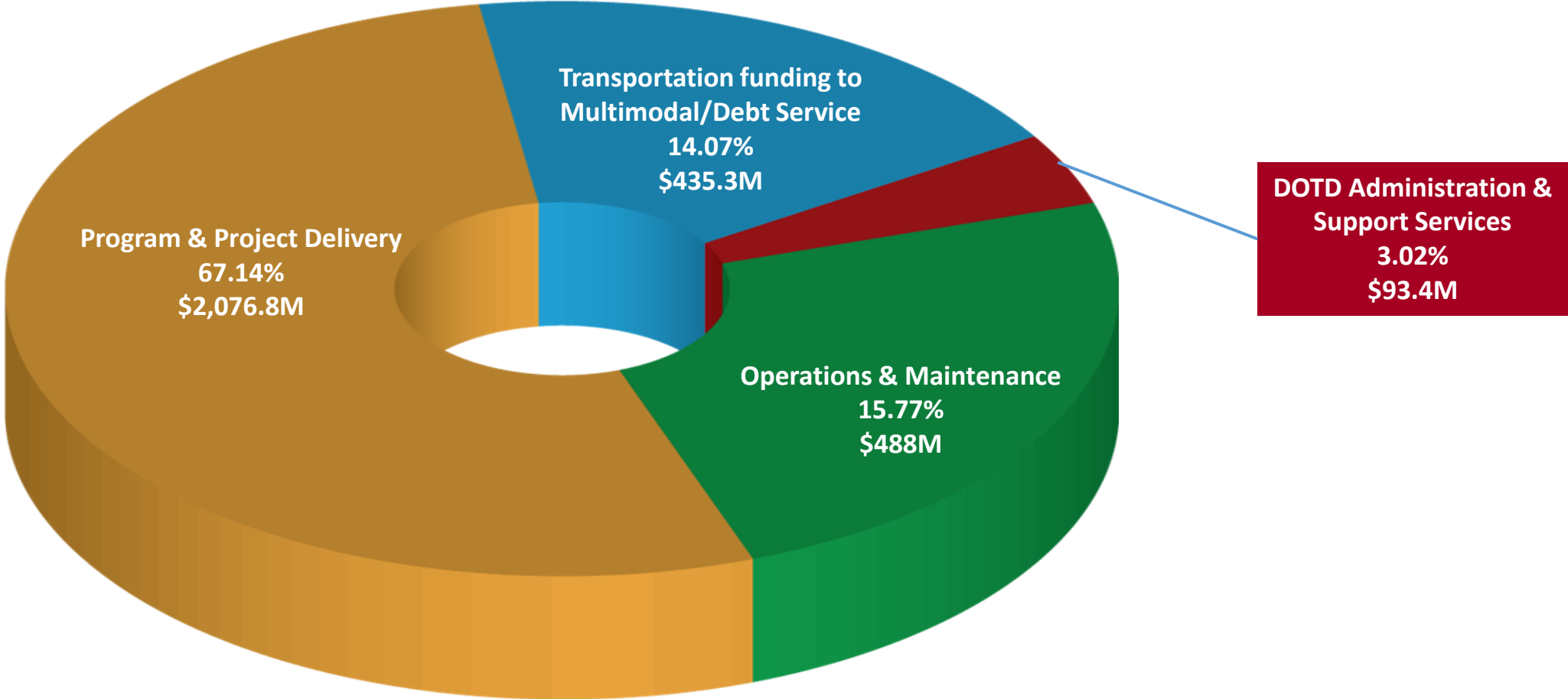


Non-DOTD Appropriated
\$208M



FY 24 \$3.1B Executive Budget

Including Capital Outlay & Other Uses of TTF



Infrastructure Investment & Jobs Act (IIJA Or BIL) 2021



Highways



Bridges



Public
Transportation



EV Infrastructure



Airports



Resiliency

- Signed November 15, 2021
- Authorizes over \$6 billion to Louisiana over 5 years
- Potential for more through competitive discretionary grant programs

FORMULA PROGRAMS

PROGRAM	LA 2022	LA 2023	LA 2024	LA 2025	LA 2026	5 YEAR TOTAL
National Highway Performance Program	\$524M	\$535M	\$545M	\$556M	\$567M	\$2.7B
Surface Transportation Block Grant Program	\$229M	\$234M	\$238M	\$244M	\$248M	\$1.2 B
Surface Transportation Alternatives	\$26M	\$26M	\$27M	\$27M	\$28M	\$134M
Highway Safety Improvement Program	\$55M	\$56M	\$57M	\$59M	\$60M	\$287M
Rail-Highway Grade Crossing Program	\$4.4M	\$4.4M	\$4.4M	\$4.4M	\$4.4M	\$22M
Congestion Mitigation & Air Quality	\$12.4M	\$13M	\$13M	\$13M	\$14M	\$65M
Metropolitan Planning	\$6M	\$6M	\$6M	\$6M	\$6M	\$30M
National Highway Freight Program	\$24M	\$25M	\$25M	\$26M	\$26M	\$127M

FORMULA PROGRAMS

PROGRAM	LA 2022	LA 2023	LA 2024	LA 2025	LA 2026	5 YEAR TOTAL
Carbon Reduction Program	\$23M	\$23M	\$24M	\$24M	\$25M	\$118M
Promoting Resilient Operations for Transformative, Efficient, and Cost-saving Transportation (PROTECT)	\$26M	\$26M	\$27M	\$27M	\$28M	\$135M
Bridge Replacement, Rehabilitation, Protection and Construction Program	\$203M	\$203M	\$203M	\$203M	\$203M	\$1B
National Vehicle Electric Formula Program	\$10M	\$15.6M	\$15.6M	\$15.6M	\$15.6M	\$73M
Construction of Ferry Boats and Ferry Terminal Facilities	\$2.2M	\$2.2M	\$2.2M	\$2.3M	\$2.3M	\$11M

Competitive Funding Opportunities

\$5B National Infrastructure Project Assistance	\$8B Infrastructure for Rebuilding America	\$12.5B Bridge Investment Program	\$2.5B Charging & Fueling Infrastructure
\$250M Congestion Relief Program	\$1B Reconnecting Communities	\$7.5B Local and Regional Project Assistance	\$2B Rural Surface Transportation Grant

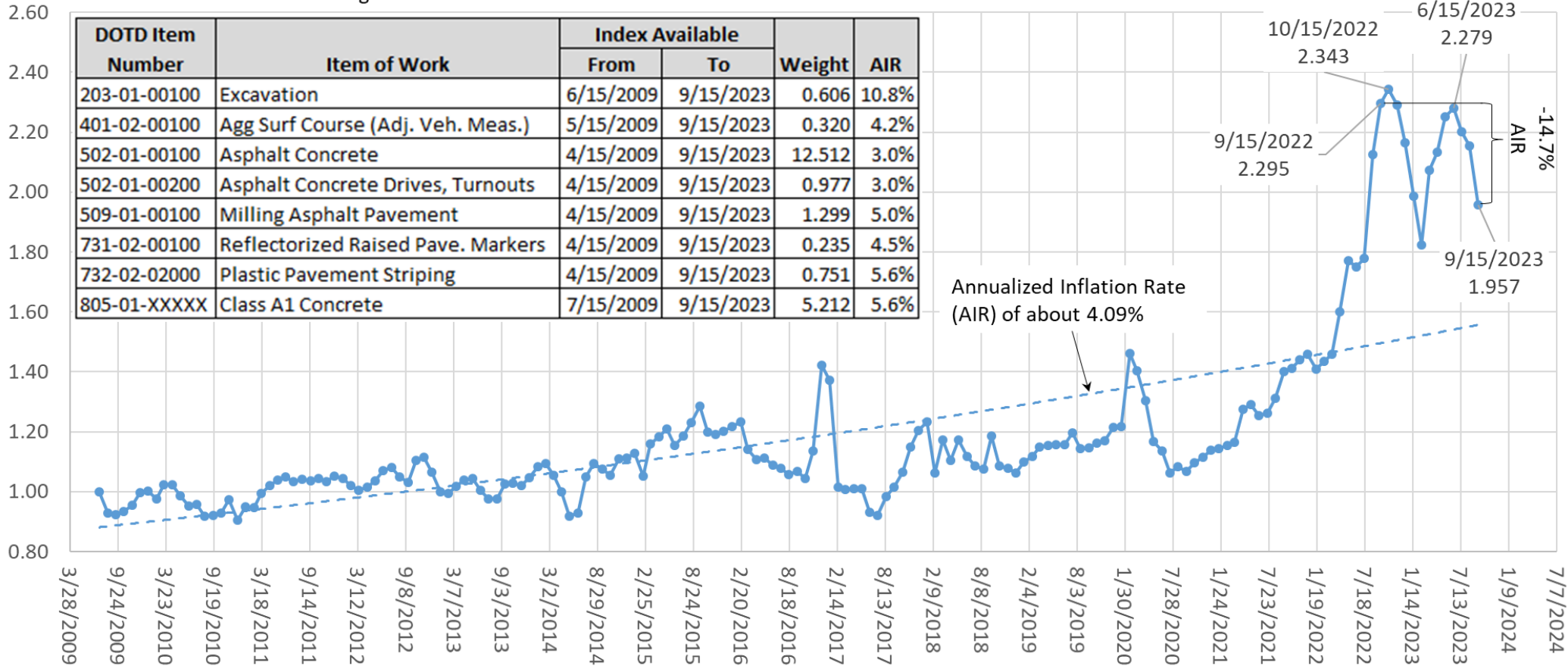
Inflation

Highway Construction Cost Index

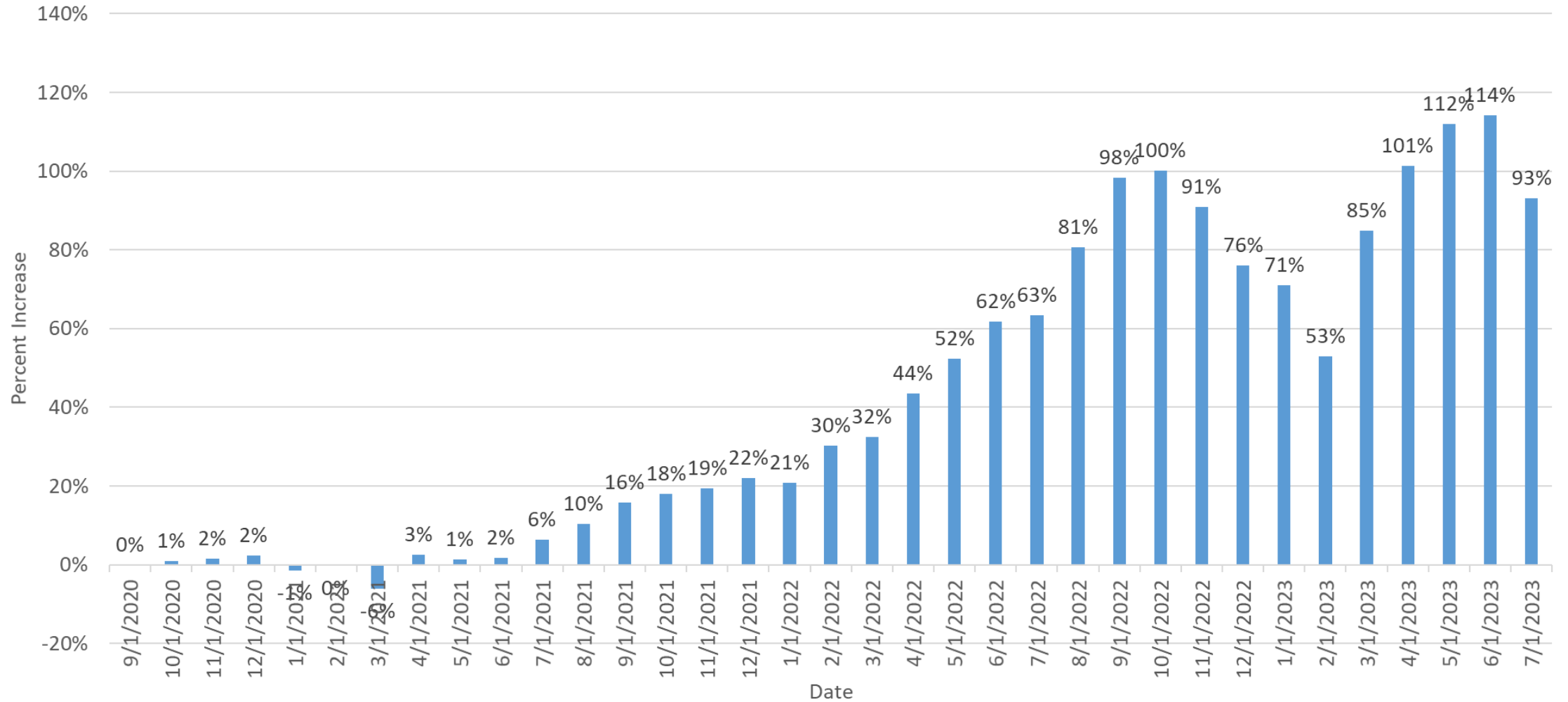
Louisiana Highway Construction Cost Index
(Base Date: June, 2009)

Index is Based on The Following Items:

DOTD Item Number	Item of Work	Index Available		Weight	AIR
		From	To		
203-01-00100	Excavation	6/15/2009	9/15/2023	0.606	10.8%
401-02-00100	Agg Surf Course (Adj. Veh. Meas.)	5/15/2009	9/15/2023	0.320	4.2%
502-01-00100	Asphalt Concrete	4/15/2009	9/15/2023	12.512	3.0%
502-01-00200	Asphalt Concrete Drives, Turnouts	4/15/2009	9/15/2023	0.977	3.0%
509-01-00100	Milling Asphalt Pavement	4/15/2009	9/15/2023	1.299	5.0%
731-02-00100	Reflectorized Raised Pave. Markers	4/15/2009	9/15/2023	0.235	4.5%
732-02-02000	Plastic Pavement Striping	4/15/2009	9/15/2023	0.751	5.6%
805-01-XXXXX	Class A1 Concrete	7/15/2009	9/15/2023	5.212	5.6%



Percent Change in Construction Costs Since September 2020



Chief Engineer's Perspective

Priorities (today)

- Administration Transition
- Workforce
- Relationships
- Systematic efficiencies

Projects

12 Month Engineering Starts

- All projected advertisements for Engineering and related services can be found on DOTD's website
 - Under **Consultant Contract Services (CCS)** at:

http://wwwsp.dotd.la.gov/Inside_LaDOTD/Divisions/Engineering/CCS/Pages/Projected_Ads.aspx

12 Month Engineering Starts

Project Name	Project Manager	Brief Scope of Services
IDIQ for Engineering and Technical Support Services for Critical Projects	Peggy Jo Paine	Provide Engineering and Technical Support Services.
Electric Vehicle (EV) Infrastructure Program	Tance Fremin	Provide physical on-site inspections, data collection, gathering reports from EV charging stations.
I-310/US 90 Interchange	Corey Landry	Preliminary and Final Plans, Geotechnical Engineering, Construction Support
US 80: Alligator Bayou Bridges; US 80: Bridges Near Minden	Ryan Rodney	Environmental Services, Geotechnical Services, Surveying Services, Roadway Preliminary and Final Plans, Bridge Preliminary and Final Plans
LRSP and SRTPP Program Mgmt: 2023-2027	Laura Riggs	Program Management
US 71: ICG Railroad Overpass Rehab (HBI) US 71: Market St. Bridge over ICG RR (HBI)	Valerie Tourres	Survey, Geotechnical Services, Traffic Engineering, Preliminary and Final Design, Construction Engineering Support
LA 182 New Iberia Sidewalks	Brian Nunes	Preliminary and Final Plans
OV - CE&I for LA 1/LA 415 Connector	Corey Landry	OV of CMAR project

12 Month Engineering Starts

Project Name	Project Manager	Brief Scope of Services
IDIQ Contract for Statewide Tunnel Inspection	Bradley Mistich	Tunnel Inspection and Repair/Rehabilitation plan preparation
New Ferry Boat -Plaquemines	Steven Sibley	Naval Architecture and Marine Engineering Services for the design of a new ferry vessel for the Belle Chase \ Scarsdale Ferry Crossing
Traffic Data Collection and Monitoring Services	Candis Washington	Collect traffic volume and classification on local, State, and NHS roadways
LA 44: Pelican Point Roundabout & Widen	Jacob Fusilier	Plan development
LA 44: I-10 Roundabouts	Jacob Fusilier	Plan development
IDIQ Contract for Statewide Facilities and Rest Area Engineering Services	Scott Guinn	Planning and Design of DOTD facilities, rest area facilities or welcome centers, site design and facilities, architecture and landscape
Statewide Aviation Program Update	Michael Burrows	Provide engineering, technical, environmental, and planning services related to the statewide aviation system and individual airports.

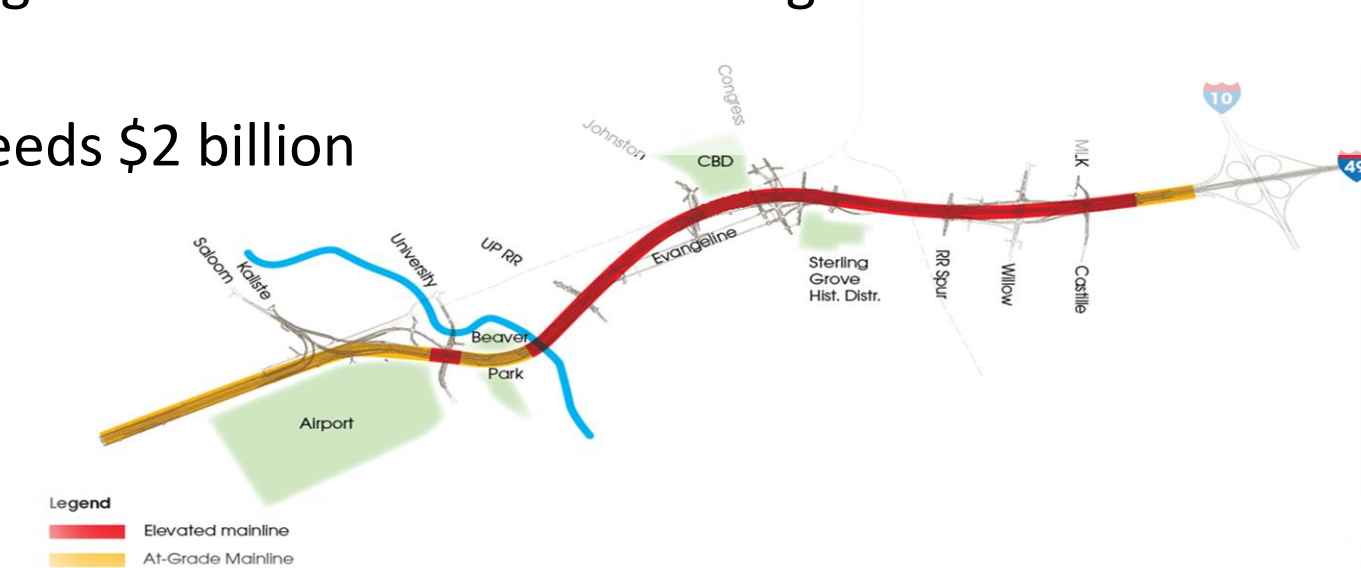
Priority Projects

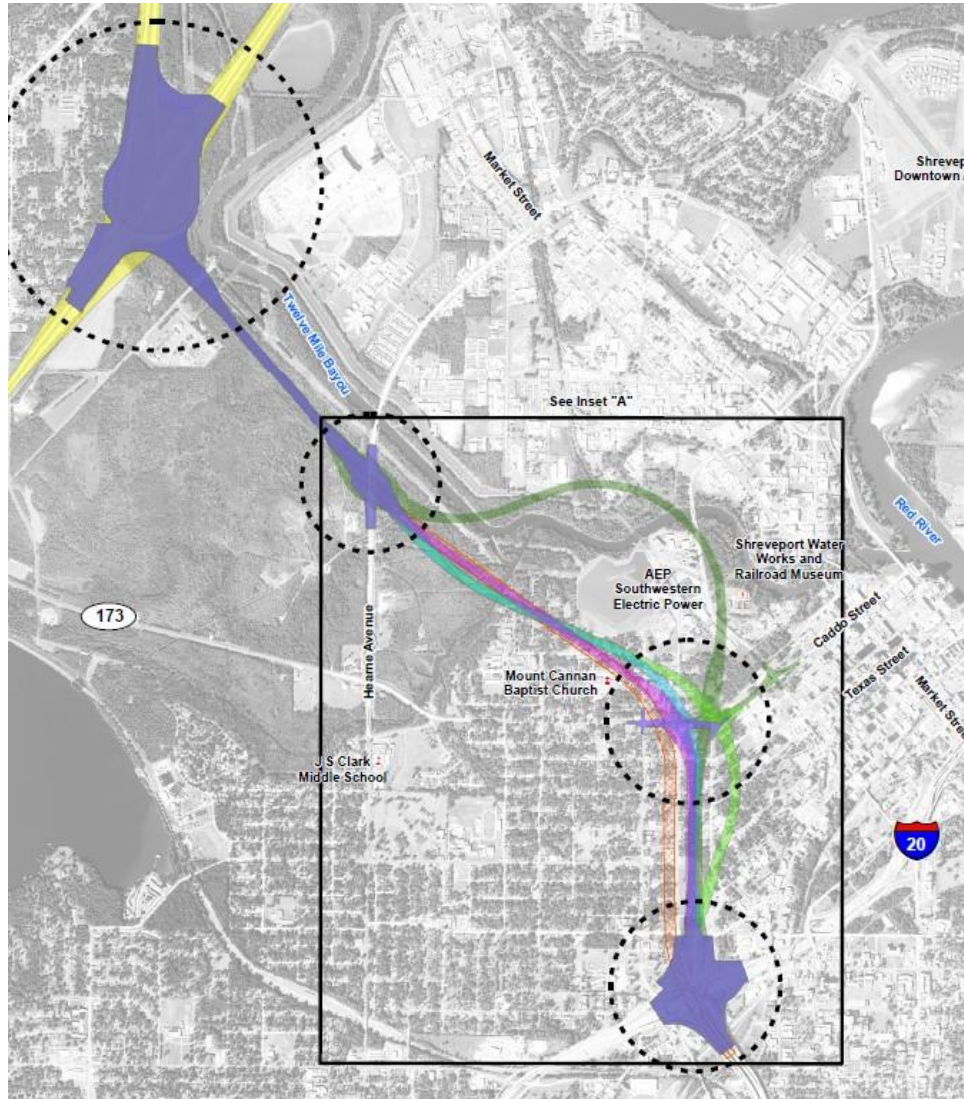
Mid / Long Term Projects

<u>Project</u>	<u>Parish</u>	<u>Est Construction Cost (\$1000)</u>
FUTURE I-49 SOUTH (RACELAND TO NO)	District 02	\$ 5,800,000.00
CALCASIEU RIVER BRIDGE (HBI) – P3	Calcasieu	\$ 2,200,000.00
LAFAYETTE CONNECTOR	Lafayette	\$ 1,313,604.89
MRB SOUTH BR – P3	District 61	\$ 1,100,000.00
I-10: LA 415 TO ESSEN ON I-10 AND I-12	E & W Baton Rouge	\$ 1,000,000.00
I-49 SOUTH (RICOHOC TO BERWICK)	St. Mary	\$ 417,000.00
I 10: WILLIAMS BLVD - VETERANS BLVD	Jefferson	\$ 174,607.92
LA 1/LA 415 CONNECTOR - CMAR	West Baton Rouge	\$ 165,500.00
I-20 Rehab & Expansion	Caddo and Bossier	\$ 350,000.00
I-49 Inner City Connector	Caddo	\$ 100,000.00

I-49 Lafayette Connector

- 5.5 mile corridor, approx. 3.5 miles elevated with multiple interchanges.
- SEIS/SROD summer of 2025
- Preliminary Design of Kaliste Saloom Interchange and Willow Interchange
- Project cost exceeds \$2 billion





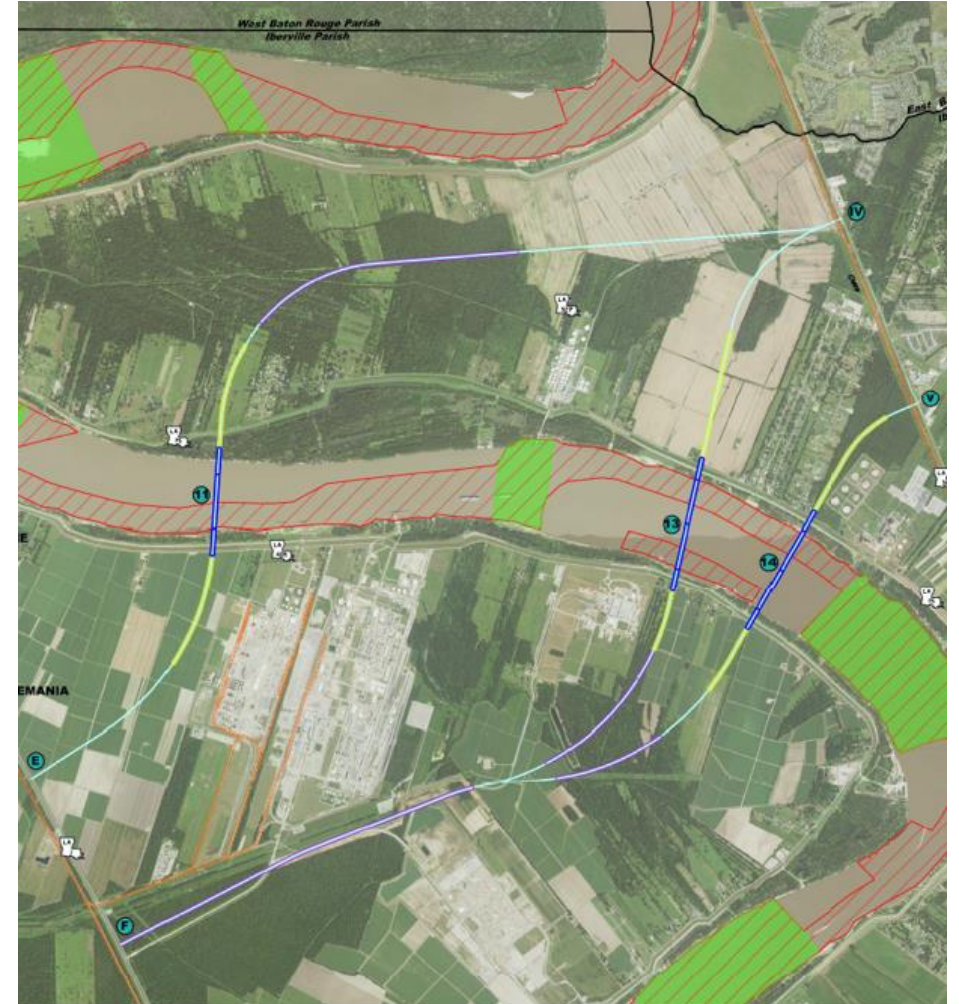
I-49 Shreveport Inner City Connector

- Connect separate sections of I-49 by extending it from I-20 to I-220 .
- Currently evaluating alignment options.
- EIS expected in Late 2024
- \$1 billion (Approx.)

MRB South GBR: LA 1 to LA 30

Schedule

- NTP environmental work Q4 2023
- Preferred alternative Q2 2024
- Finding of No Significant Impact (FONSI) Q4 2024
- Construction cost estimated at \$1.5B
- Eligible for \$300M appropriated by legislature
- Dedicated \$40M/yr Vehicle Sales Tax
- Tolling has been discussed
- Potential for alternative project delivery



I-20 MRB @ Vicksburg

- Ongoing pier movement = long term concerns
- Intend to pursue consultant services Q2 2024
- Short, intermediate and long term solutions are being pursued simultaneously
 - Major rehab/retrofit, on-site replacement, new location replacement
- Early estimates range from \$1 - \$3B
- 50% cost share with MDOT





LOUISIANA STATEWIDE TRANSPORTATION PLAN

- www.latransportationplan.la.gov
 - Louisiana's Transportation Future - video
- Input through survey on website
- Completion/Finalize by end of 2025

Discussion